

Date: 21-04-2026

Conclusion:

1. Dampness was found on the wall, and water was entering from the bathroom tile and commode area.
2. Plumbing line leakage, from the bathroom hot water outlet (Pipe replacement to be done)
3. Capillary rise found. (PU grouting to be done)

Solution:

1. **Bathroom tile grouting:** Cutting the tile joint 2mm wide and 8mm deep, clean the joints. Pore 1:10 water repellent and water, allow for 12 hours. Fill the tile joint with 3-component epoxy tile grout, and allow for 12 hours.
2. **PU Injection Grouting retaining wall:** PU pressure grouting: Making the hole of 14mm dia and fixing the packer of 12mm dia, injecting the PU grout at 150 PSI, allowing for 2-3 days (ceiling/wall).
3. **Damp guard application:** Cleaning and removing existing torred paint, apply 2 coats of Fosroc brush bond TGP, interval of 3-4 hours, allow for dry 6 hours, apply 2 coats of Damp guard (Dr. Fixit) allow 2 hours. Allow to dry for 6 hrs. Applying 1 coat of primer allows for drying. Apply 2 coats of paint (Premium emulsion only).
4. **Bore Packing:** Bore packing with non-shrink cement concrete.
5. Hot water pipe to be replaced.

- end-

Note: Image: 1.15 RB06960X Demonstrating unusual water dispersion.

Sample

560081 Bangalore

9999999999

ABC

Inspector: Build Healer

Thermal images

Page 2

1.1 *RB06976X.JPG*

1.2 *RB06975X.JPG*

1.3 *RB06974X.JPG*

1.4 *RB06973X.JPG*

1.5 *RB06972X.JPG*

1.6 *RB06971X.JPG*

1.7 *RB06970X.JPG*

1.8 *RB06968X.JPG*

1.9 *RB06967X.JPG*

1.10 *RB06966X.JPG*

1.11 *RB06965X.JPG*

1.12 *RB06963X.JPG*

1.13 *RB06962X.JPG*

1.14 *RB06961X.JPG*

1.15 *RB06960X.JPG*

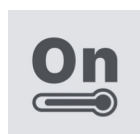
1.16 *RB06959X.JPG*

1.17 *RB06958X.JPG*

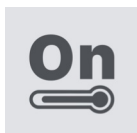
1.18 *RB06957X.JPG*

1.19 *RB06956X.JPG*

1.20 *RB06955X.JPG*



- 1.21 RB06954X.JPG
- 1.22 RB06953X.JPG
- 1.23 RB06952X.JPG
- 1.24 RB06951X.JPG
- 1.25 RB06950X.JPG
- 1.26 RB06949X.JPG
- 1.27 RB06948X.JPG
- 1.28 RB06947X.JPG
- 1.29 RB06946X.JPG
- 1.30 RB06945X.JPG
- 1.31 RB06944X.JPG
- 1.32 RB06943X.JPG



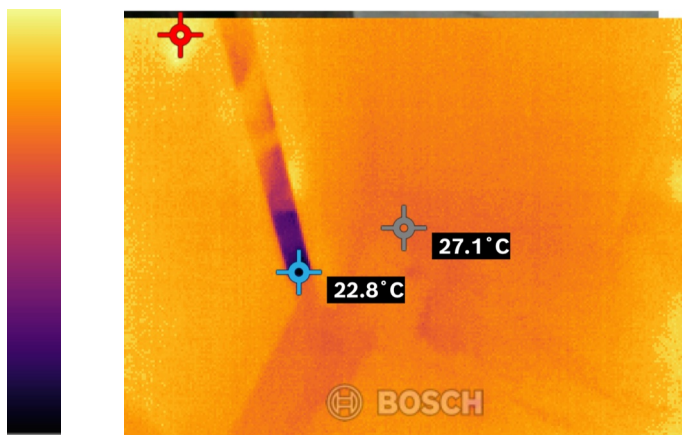
1.1 RB06976X.JPG

Page 1

Device: GTC 600 C Professional
Serial Number: 0158

 Hotspot:	29.2 °C	 Material:	Tiles
 Coldspot:	22.8 °C	 Emissivity:	0.91
 Center Spot:	27.1 °C	 Reflected Temperature:	23.0 °C

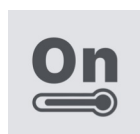
29.2 °C



22.8 °C



Taken on 14/04/26



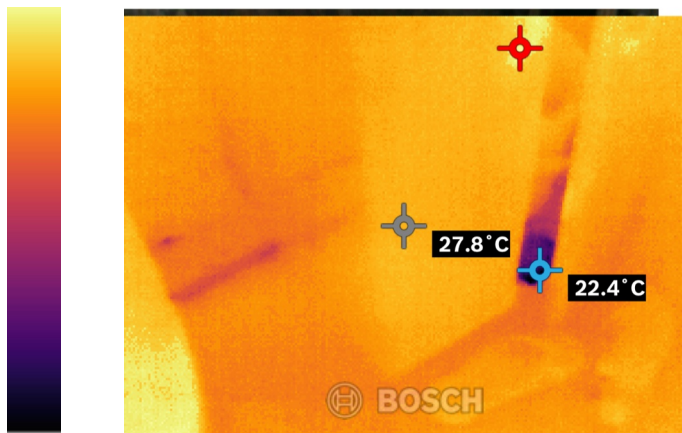
1.2 RB06975X.JPG

Page 1

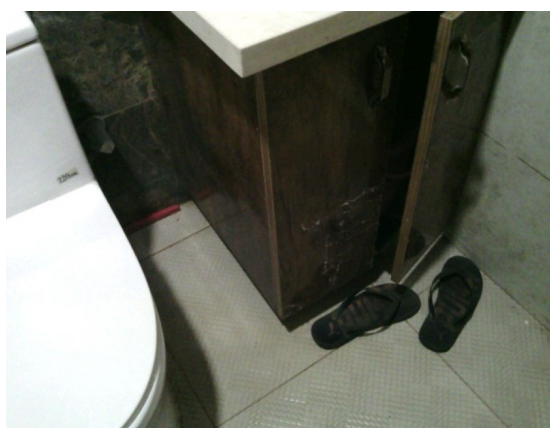
Device: GTC 600 C Professional
Serial Number: 0158

 Hotspot:	28.9 °C	 Material:	Tiles
 Coldspot:	22.4 °C	 Emissivity:	0.91
 Center Spot:	27.8 °C	 Reflected Temperature:	23.0 °C

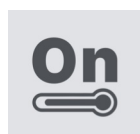
28.9 °C



22.4 °C



Taken on 14/04/26

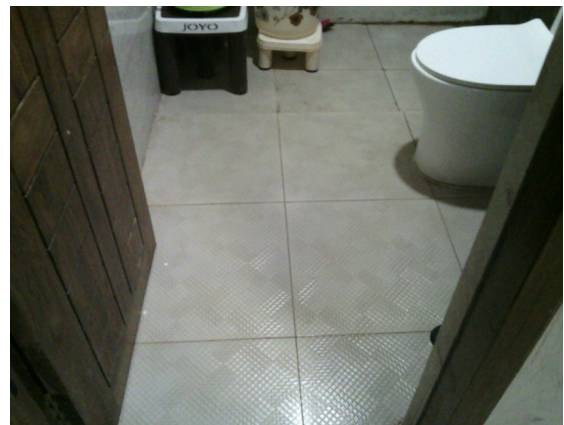
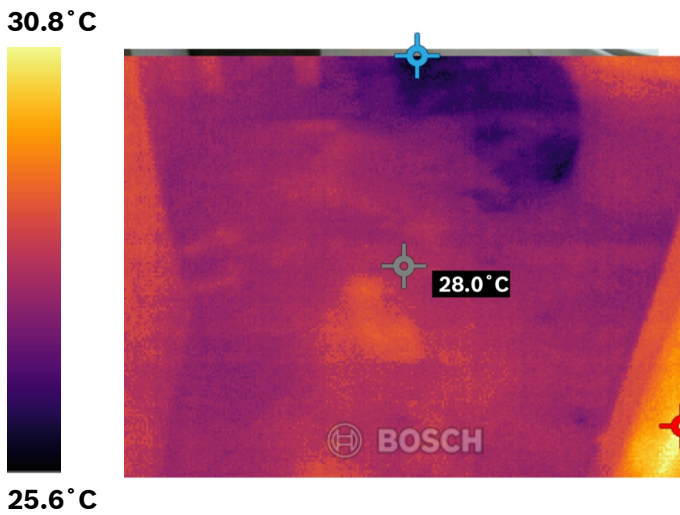


1.3 RB06974X.JPG

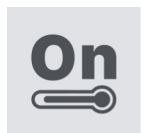
Page 1

Device: GTC 600 C Professional
Serial Number: 0158

 Hotspot:	30.8 °C	 Material:	Tiles
 Coldspot:	25.6 °C	 Emissivity:	0.91
 Center Spot:	28.0 °C	 Reflected Temperature:	23.0 °C



Taken on 14/04/26



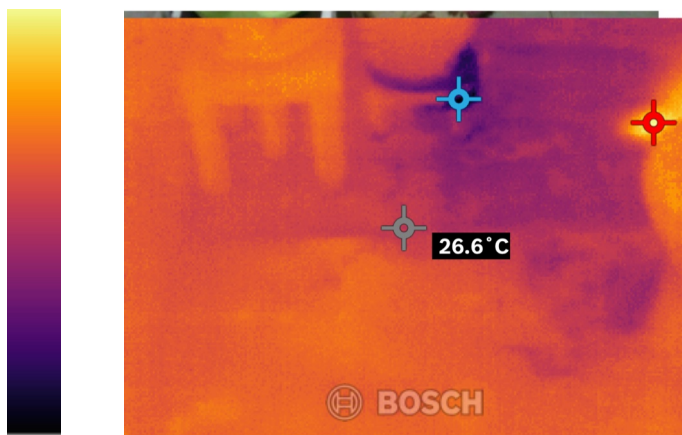
1.4 RB06973X.JPG

Page 1

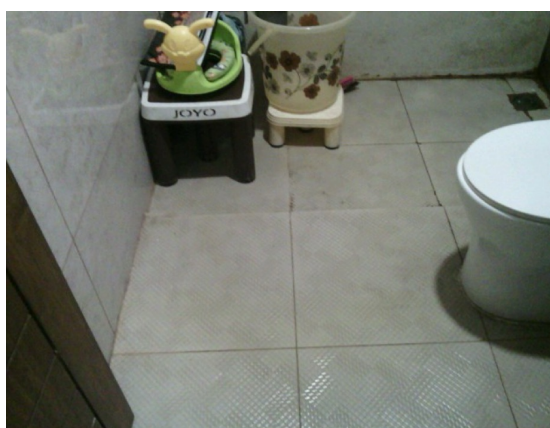
Device: GTC 600 C Professional
Serial Number: 0158

 Hotspot:	30.3 °C	 Material:	Tiles
 Coldspot:	22.9 °C	 Emissivity:	0.91
 Center Spot:	26.6 °C	 Reflected Temperature:	23.0 °C

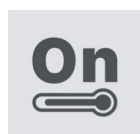
30.3 °C



22.9 °C



Taken on 14/04/26



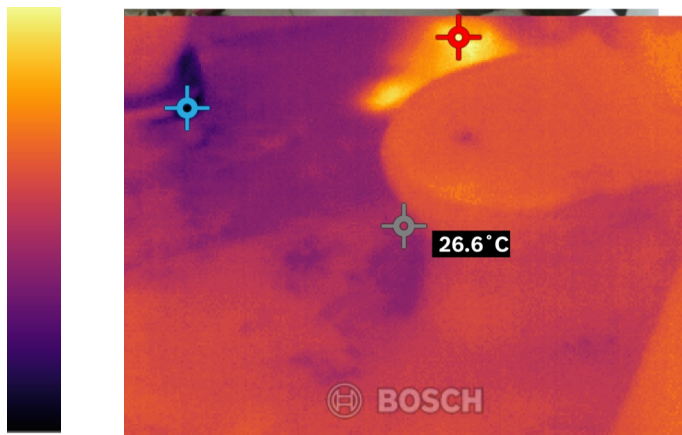
1.5 RB06972X.JPG

Page 1

Device: GTC 600 C Professional
Serial Number: 0158

 Hotspot:	31.0 °C	 Material:	Tiles
 Coldspot:	22.8 °C	 Emissivity:	0.91
 Center Spot:	26.6 °C	 Reflected Temperature:	23.0 °C

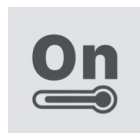
31.0 °C



22.8 °C



Taken on 14/04/26



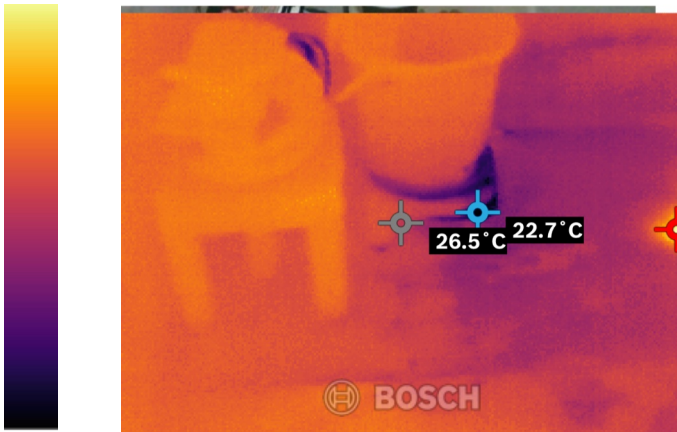
1.6 RB06971X.JPG

Page 1

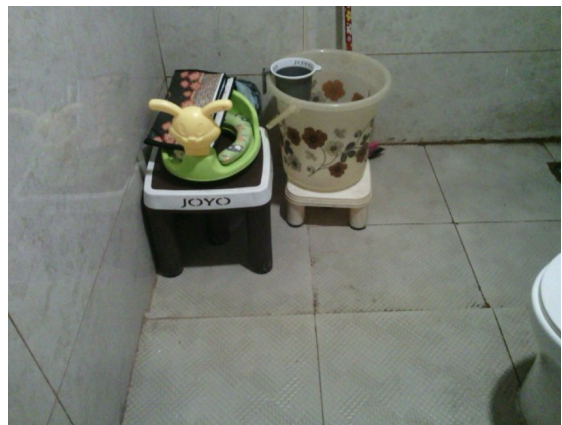
Device: GTC 600 C Professional
Serial Number: 0158

 Hotspot:	30.1 °C	 Material:	Tiles
 Coldspot:	22.7 °C	 Emissivity:	0.91
 Center Spot:	26.5 °C	 Reflected Temperature:	23.0 °C

30.1 °C



22.7 °C



Taken on 14/04/26



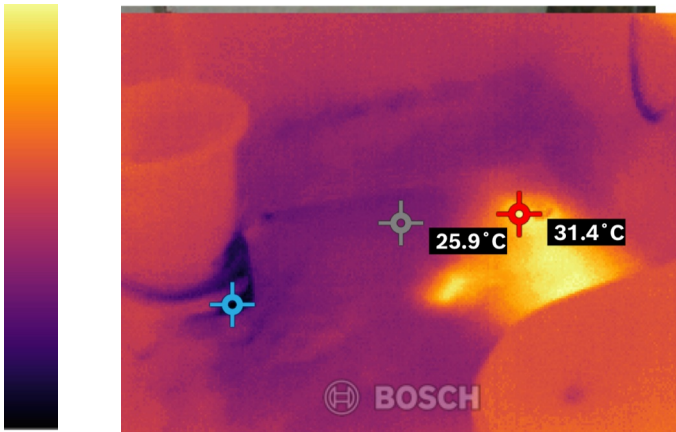
1.7 RB06970X.JPG

Page 1

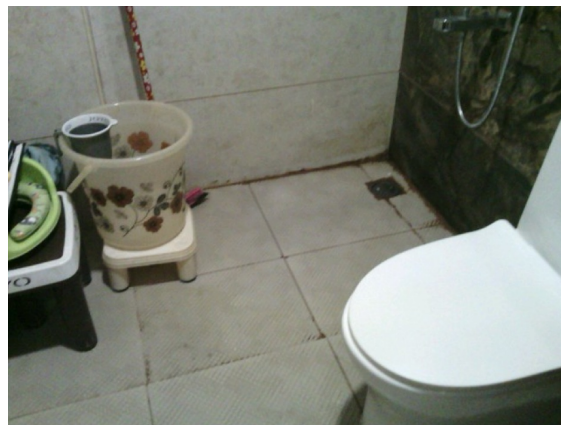
Device: GTC 600 C Professional
Serial Number: 0158

 Hotspot:	31.4 °C	 Material:	Tiles
 Coldspot:	23.0 °C	 Emissivity:	0.91
 Center Spot:	25.9 °C	 Reflected Temperature:	23.0 °C

31.4 °C



23.0 °C



Taken on 14/04/26



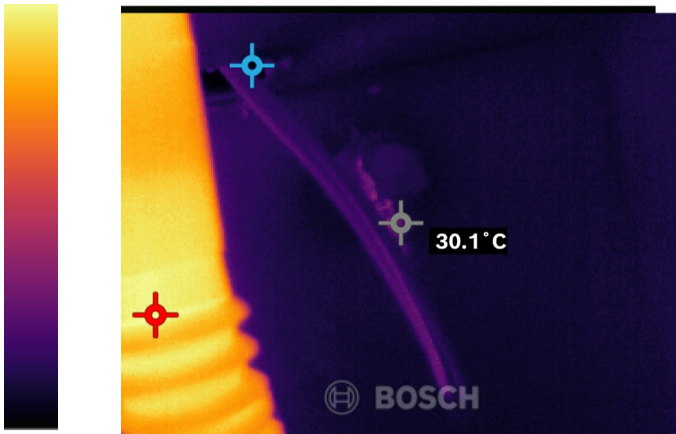
1.8 RB06968X.JPG

Page 1

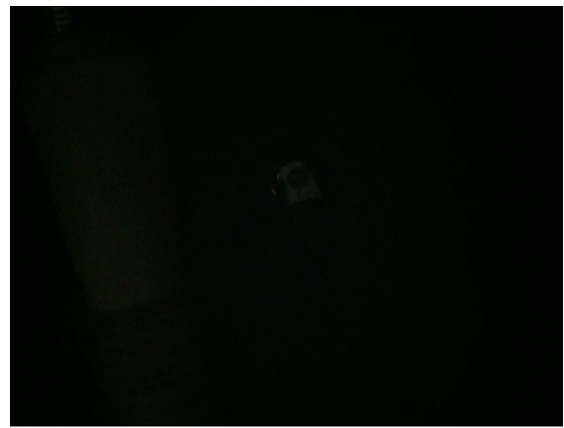
Device: GTC 600 C Professional
Serial Number: 0158

 Hotspot:	40.4 °C	 Material:	Tiles
 Coldspot:	27.0 °C	 Emissivity:	0.91
 Center Spot:	30.1 °C	 Reflected Temperature:	23.0 °C

40.4 °C



27.0 °C



Taken on 14/04/26



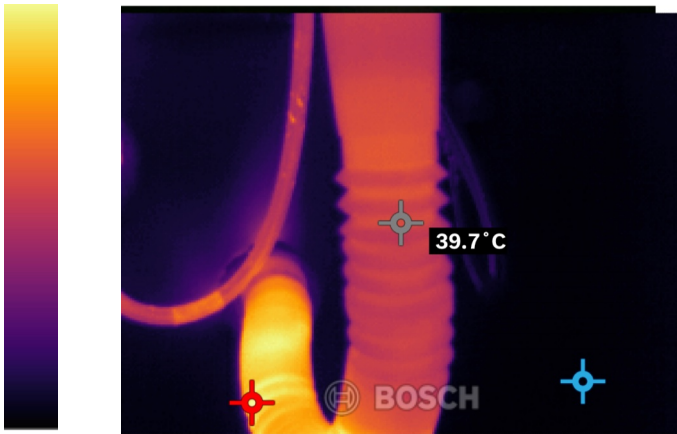
1.9 RB06967X.JPG

Page 1

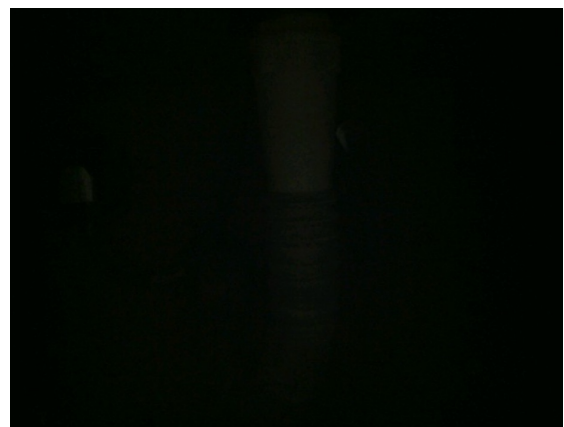
Device: GTC 600 C Professional
Serial Number: 0158

 Hotspot:	48.4 °C	 Material:	Tiles
 Coldspot:	27.7 °C	 Emissivity:	0.91
 Center Spot:	39.7 °C	 Reflected Temperature:	23.0 °C

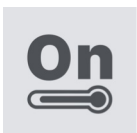
48.4 °C



27.7 °C



Taken on 14/04/26



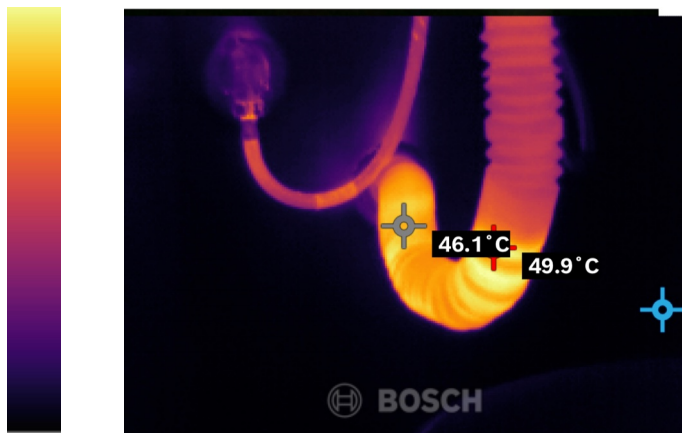
1.10 RB06966X.JPG

Page 1

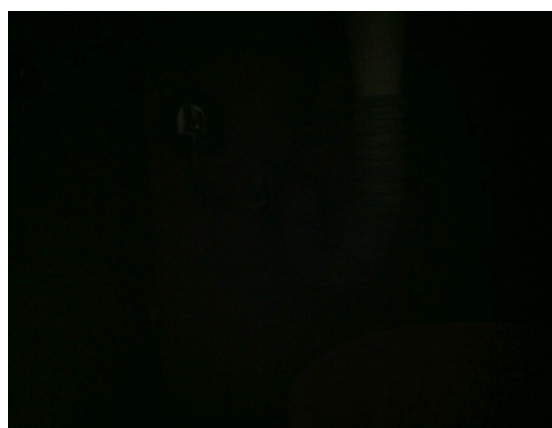
Device: GTC 600 C Professional
 Serial Number: 0158

	Hotspot:	49.9 °C		Material:	Tiles
	Coldspot:	27.5 °C		Emissivity:	0.91
	Center Spot:	46.1 °C		Reflected Temperature:	23.0 °C

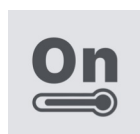
49.9 °C



27.5 °C



Taken on 14/04/26



1.11 RB06965X.JPG

Page 1

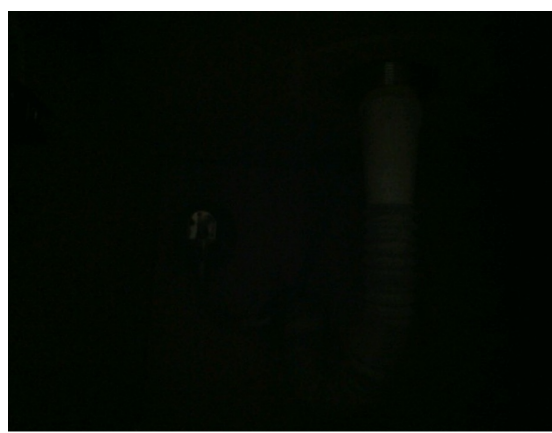
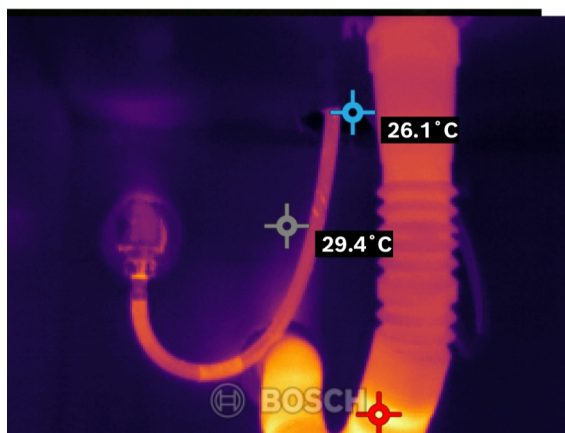
Device: GTC 600 C Professional
 Serial Number: 0158

 Hotspot:	49.8 °C	 Material:	Tiles
 Coldspot:	26.1 °C	 Emissivity:	0.91
 Center Spot:	29.4 °C	 Reflected Temperature:	23.0 °C

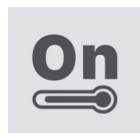
49.8 °C



26.1 °C



Taken on 14/04/26



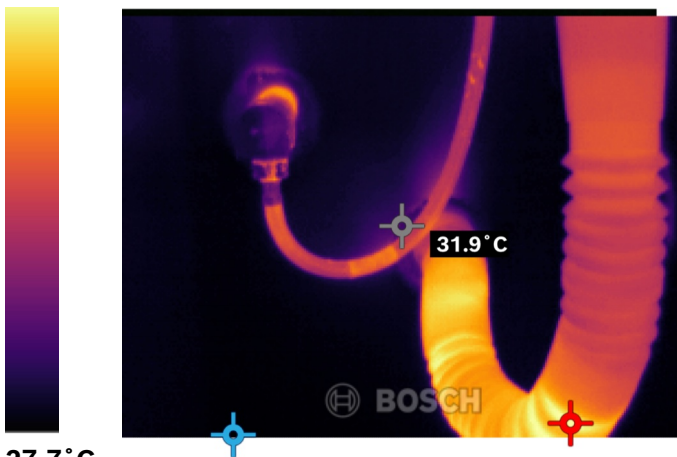
1.12 RB06963X.JPG

Page 1

Device: GTC 600 C Professional
Serial Number: 0158

	Hotspot:	49.6 °C		Material:	Tiles
	Coldspot:	27.7 °C		Emissivity:	0.91
	Center Spot:	31.9 °C		Reflected Temperature:	23.0 °C

49.6 °C



27.7 °C



Taken on 14/04/26

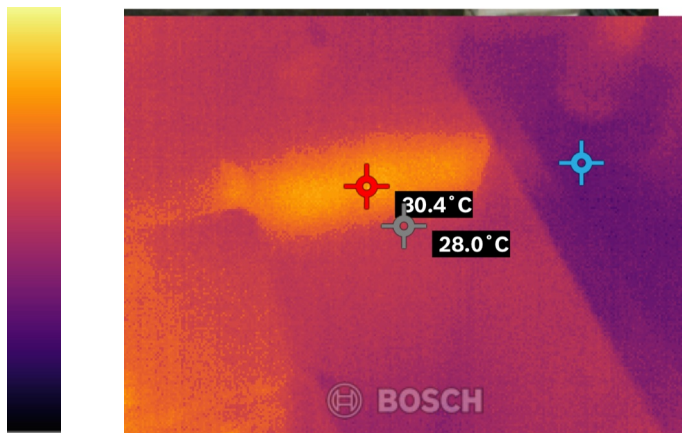
1.13 RB06962X.JPG

Page 1

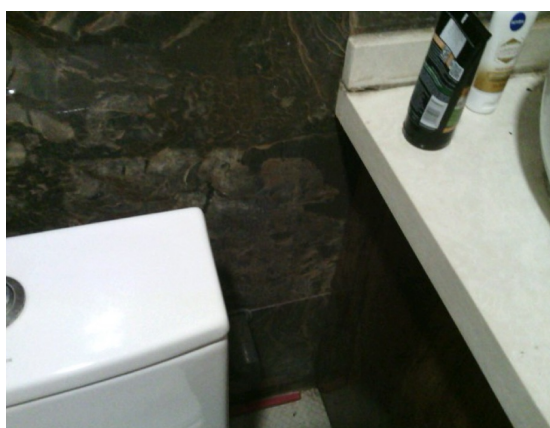
Device: GTC 600 C Professional
Serial Number: 0158

 Hotspot:	30.4 °C	 Material:	Tiles
 Coldspot:	25.4 °C	 Emissivity:	0.91
 Center Spot:	28.0 °C	 Reflected Temperature:	23.0 °C

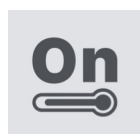
30.4 °C



25.4 °C



Taken on 14/04/26



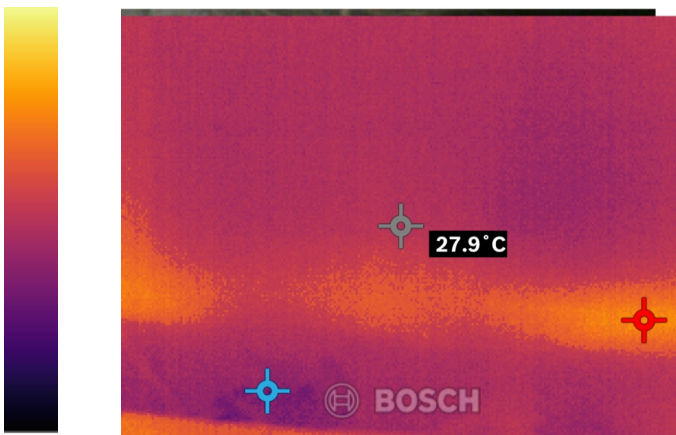
1.14 RB06961X.JPG

Page 1

Device: GTC 600 C Professional
Serial Number: 0158

 Hotspot:	30.5 °C	 Material:	Tiles
 Coldspot:	25.5 °C	 Emissivity:	0.91
 Center Spot:	27.9 °C	 Reflected Temperature:	23.0 °C

30.5 °C



25.5 °C



Taken on 14/04/26

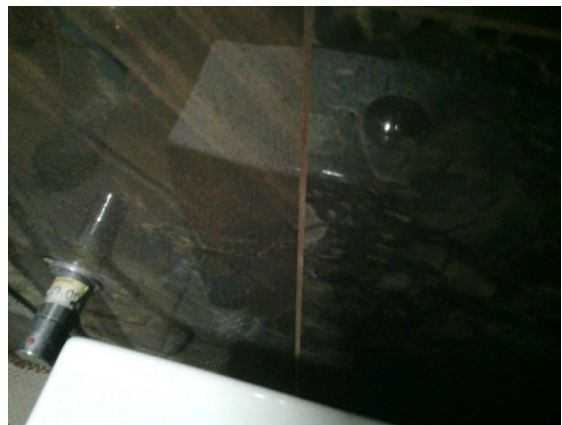
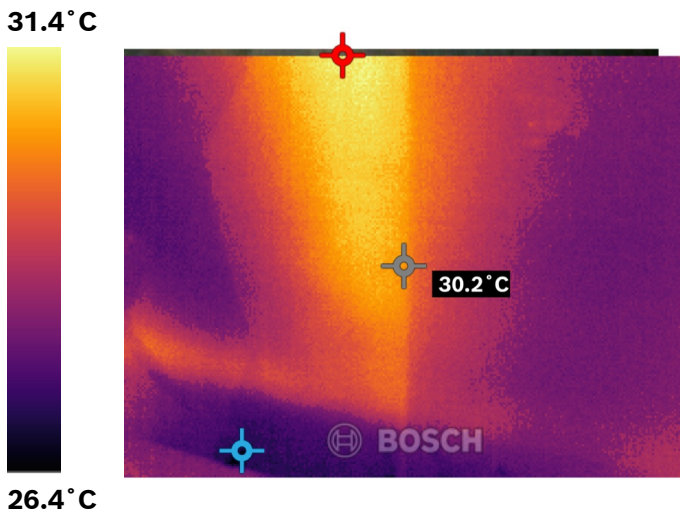


1.15 RB06960X.JPG

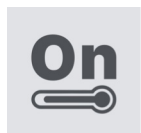
Page 1

Device: GTC 600 C Professional
Serial Number: 0158

 Hotspot:	31.4 °C	 Material:	Tiles
 Coldspot:	26.4 °C	 Emissivity:	0.91
 Center Spot:	30.2 °C	 Reflected Temperature:	23.0 °C



Taken on 14/04/26



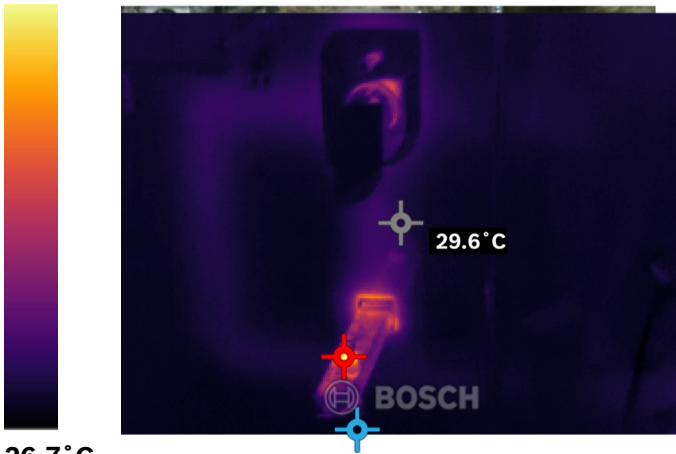
1.16 RB06959X.JPG

Page 1

Device: GTC 600 C Professional
Serial Number: 0158

 Hotspot:	49.8 °C	 Material:	Tiles
 Coldspot:	26.7 °C	 Emissivity:	0.91
 Center Spot:	29.6 °C	 Reflected Temperature:	23.0 °C

49.8 °C



26.7 °C



Taken on 14/04/26

1.17 RB06958X.JPG

Page 1

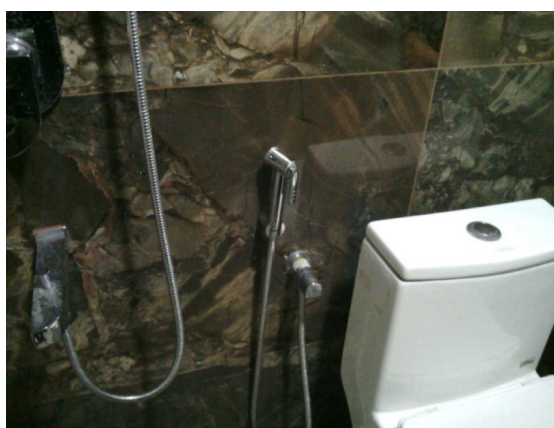
Device: GTC 600 C Professional
 Serial Number: 0158

	Hotspot:	31.3 °C		Material:	Tiles
	Coldspot:	26.3 °C		Emissivity:	0.91
	Center Spot:	28.2 °C		Reflected Temperature:	23.0 °C

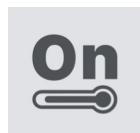
31.3 °C



26.3 °C



Taken on 14/04/26



1.18 RB06957X.JPG

Page 1

Device: GTC 600 C Professional
 Serial Number: 0158

 Hotspot:	44.5 °C	 Material:	Tiles
 Coldspot:	25.2 °C	 Emissivity:	0.91
 Center Spot:	27.6 °C	 Reflected Temperature:	23.0 °C

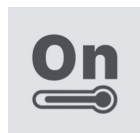
44.5 °C



25.2 °C



Taken on 14/04/26



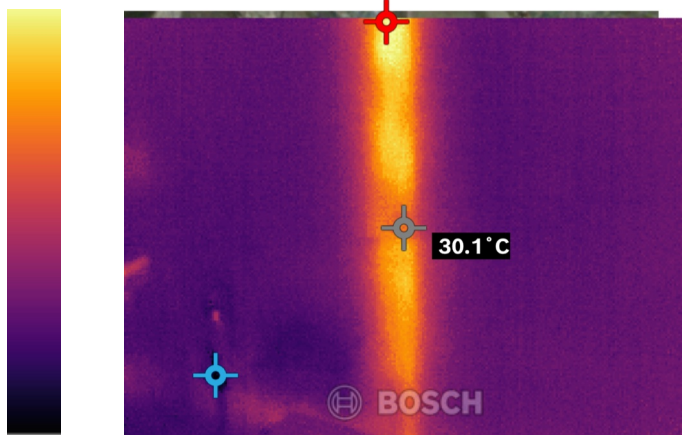
1.19 RB06956X.JPG

Page 1

Device: GTC 600 C Professional
Serial Number: 0158

 Hotspot:	31.8 °C	 Material:	Tiles
 Coldspot:	26.6 °C	 Emissivity:	0.91
 Center Spot:	30.1 °C	 Reflected Temperature:	23.0 °C

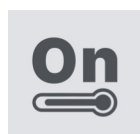
31.8 °C



26.6 °C



Taken on 14/04/26



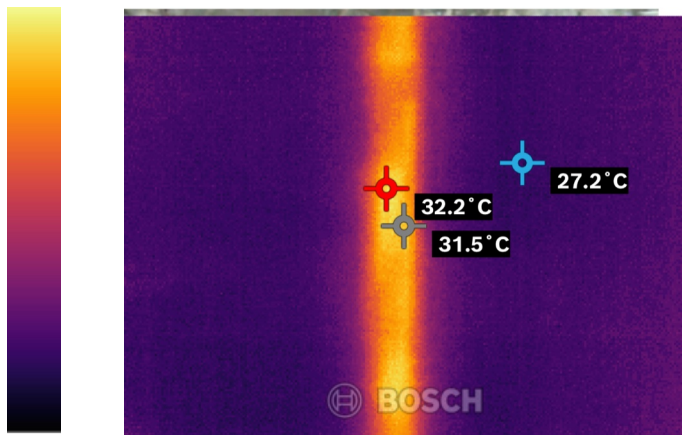
1.20 RB06955X.JPG

Page 1

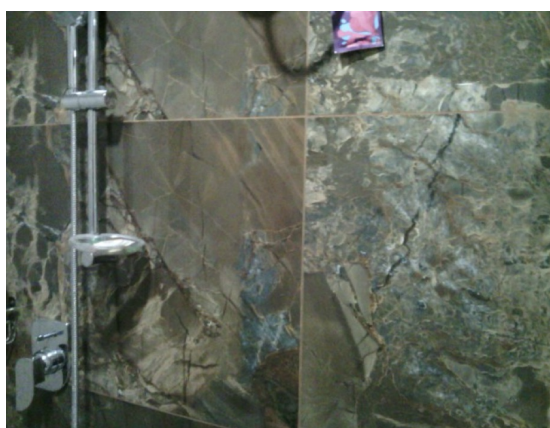
Device: GTC 600 C Professional
 Serial Number: 0158

 Hotspot:	32.2 °C	 Material:	Tiles
 Coldspot:	27.2 °C	 Emissivity:	0.91
 Center Spot:	31.5 °C	 Reflected Temperature:	23.0 °C

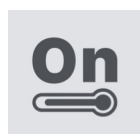
32.2 °C



27.2 °C



Taken on 14/04/26



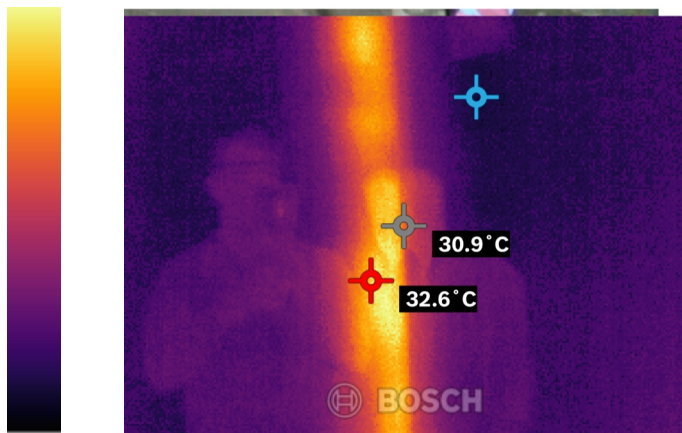
1.21 RB06954X.JPG

Page 1

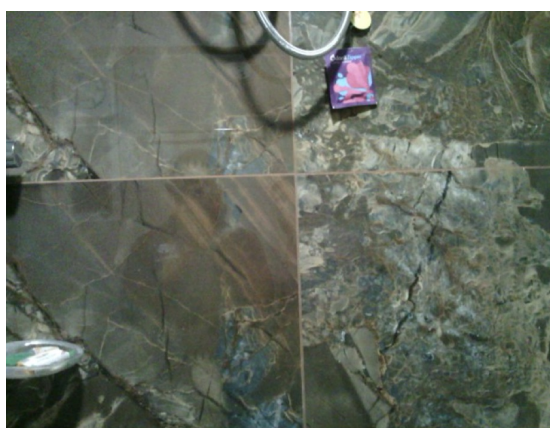
Device: GTC 600 C Professional
Serial Number: 0158

 Hotspot:	32.6 °C	 Material:	Tiles
 Coldspot:	27.6 °C	 Emissivity:	0.91
 Center Spot:	30.9 °C	 Reflected Temperature:	23.0 °C

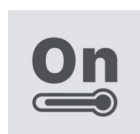
32.6 °C



27.6 °C



Taken on 14/04/26



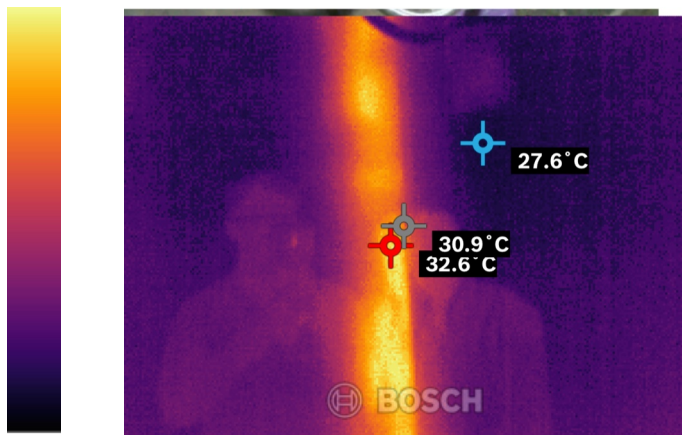
1.22 RB06953X.JPG

Page 1

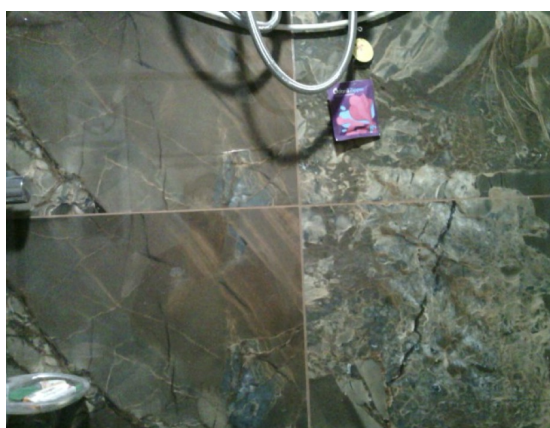
Device: GTC 600 C Professional
 Serial Number: 0158

	Hotspot:	32.6 °C		Material:	Tiles
	Coldspot:	27.6 °C		Emissivity:	0.91
	Center Spot:	30.9 °C		Reflected Temperature:	23.0 °C

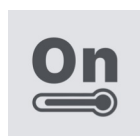
32.6 °C



27.6 °C



Taken on 14/04/26



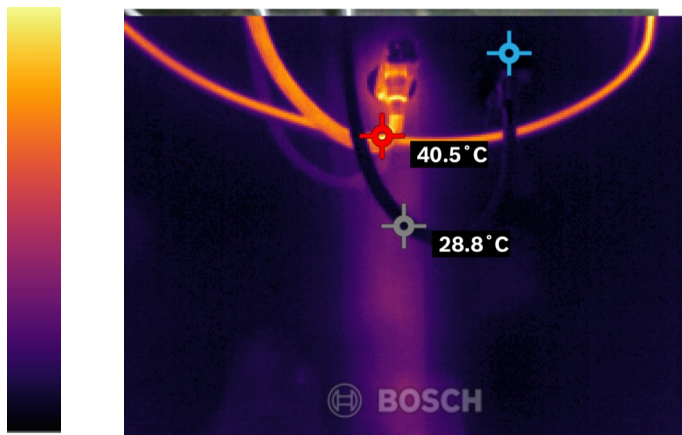
1.23 RB06952X.JPG

Page 1

Device: GTC 600 C Professional
Serial Number: 0158

 Hotspot:	40.5 °C	 Material:	Tiles
 Coldspot:	27.8 °C	 Emissivity:	0.91
 Center Spot:	28.8 °C	 Reflected Temperature:	23.0 °C

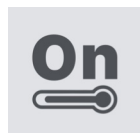
40.5 °C



27.8 °C



Taken on 14/04/26



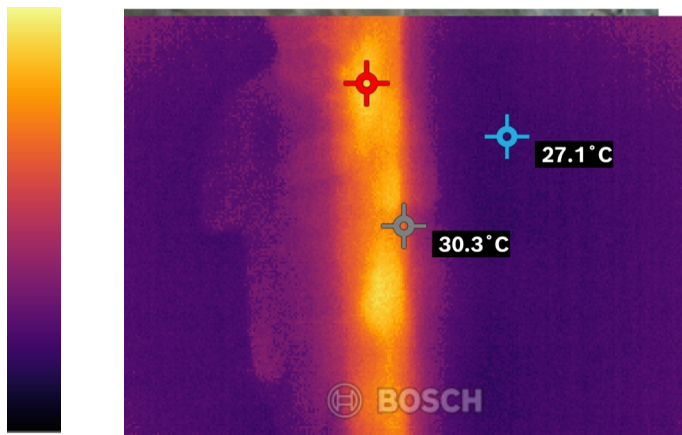
1.24 RB06951X.JPG

Page 1

Device: GTC 600 C Professional
Serial Number: 0158

 Hotspot:	32.1 °C	 Material:	Tiles
 Coldspot:	27.1 °C	 Emissivity:	0.91
 Center Spot:	30.3 °C	 Reflected Temperature:	23.0 °C

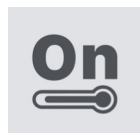
32.1 °C



27.1 °C



Taken on 14/04/26

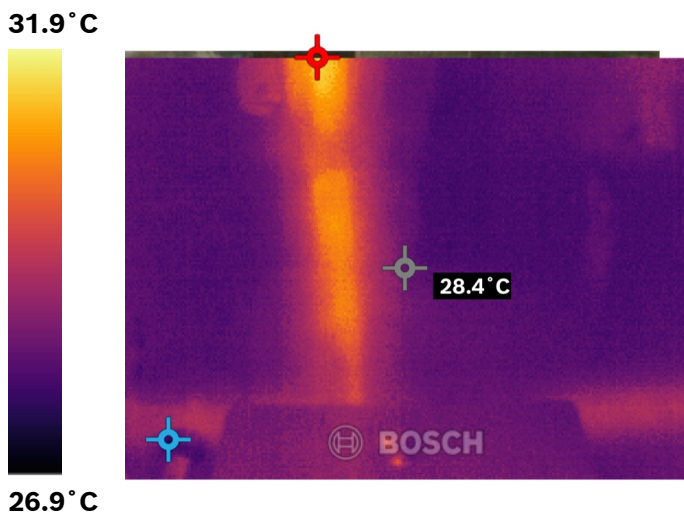


1.25 RB06950X.JPG

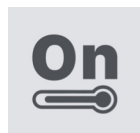
Page 1

Device: GTC 600 C Professional
Serial Number: 0158

 Hotspot:	31.9 °C	 Material:	Tiles
 Coldspot:	26.9 °C	 Emissivity:	0.91
 Center Spot:	28.4 °C	 Reflected Temperature:	23.0 °C



Taken on 14/04/26



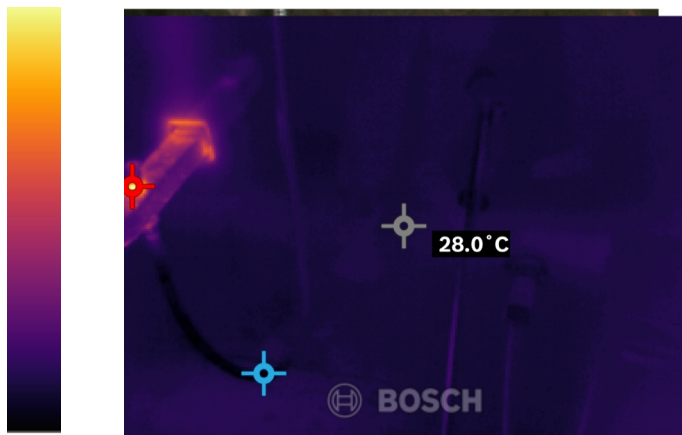
1.26 RB06949X.JPG

Page 1

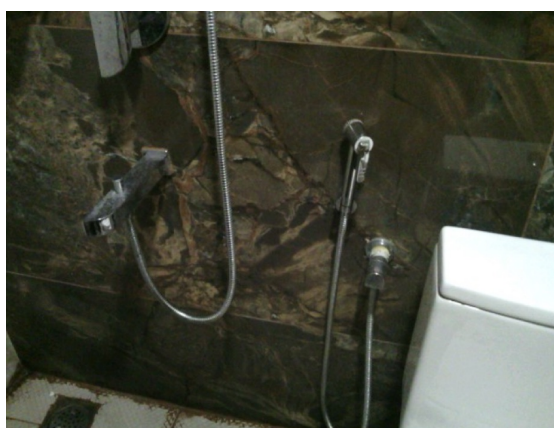
Device: GTC 600 C Professional
Serial Number: 0158

 Hotspot:	50.6 °C	 Material:	Tiles
 Coldspot:	25.4 °C	 Emissivity:	0.91
 Center Spot:	28.0 °C	 Reflected Temperature:	23.0 °C

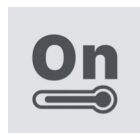
50.6 °C



25.4 °C



Taken on 14/04/26



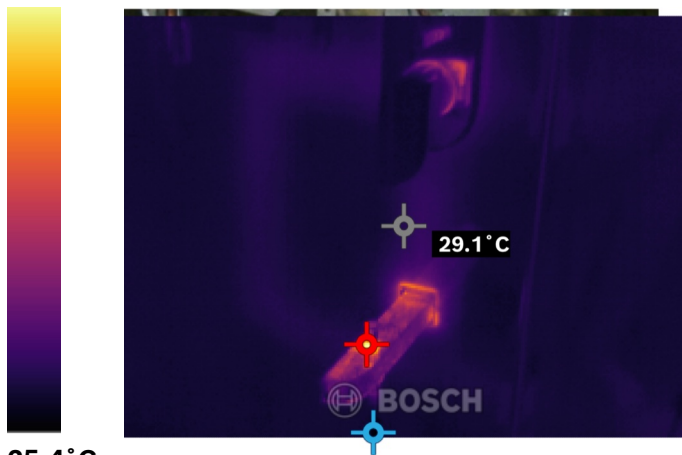
1.27 RB06948X.JPG

Page 1

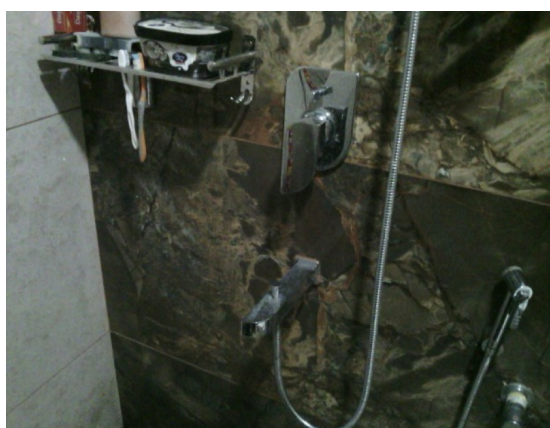
Device: GTC 600 C Professional
 Serial Number: 0158

 Hotspot:	52.1 °C	 Material:	Tiles
 Coldspot:	25.4 °C	 Emissivity:	0.91
 Center Spot:	29.1 °C	 Reflected Temperature:	23.0 °C

52.1 °C



25.4 °C



Taken on 14/04/26

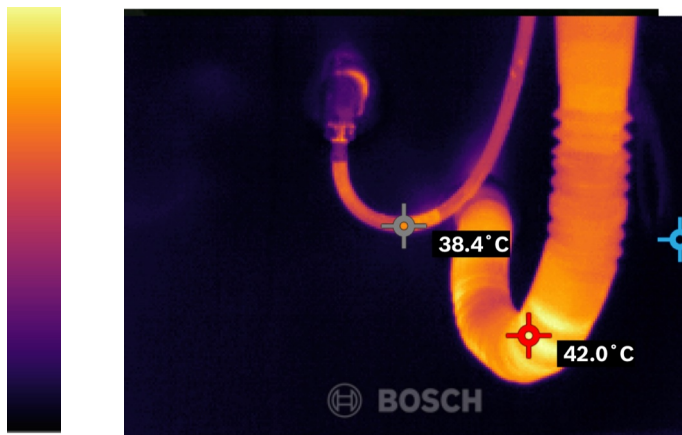
1.28 RB06947X.JPG

Page 1

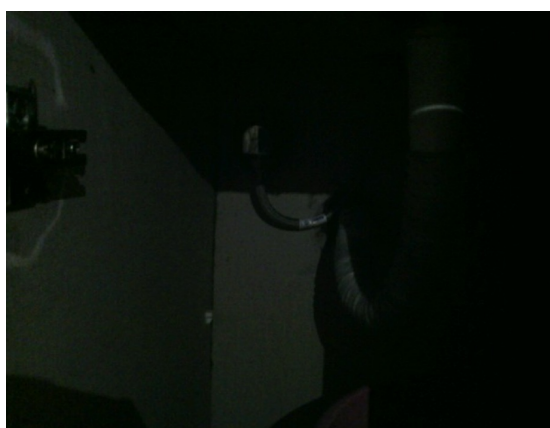
Device: GTC 600 C Professional
 Serial Number: 0158

 Hotspot:	42.0 °C	 Material:	Tiles
 Coldspot:	27.7 °C	 Emissivity:	0.91
 Center Spot:	38.4 °C	 Reflected Temperature:	23.0 °C

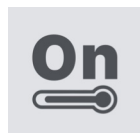
42.0 °C



27.7 °C



Taken on 14/04/26



1.29 RB06946X.JPG

Page 1

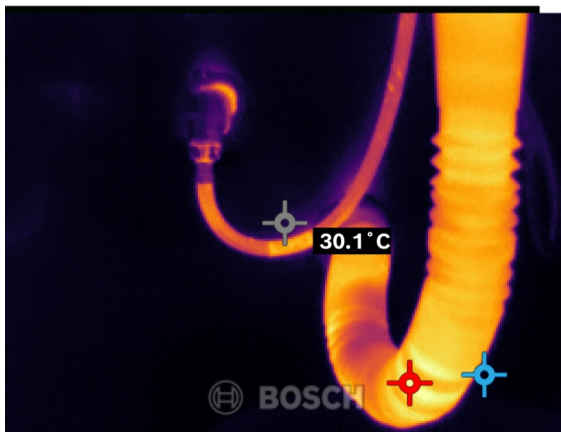
Device: GTC 600 C Professional
Serial Number: 0158

 Hotspot:	42.6 °C	 Material:	Tiles
 Coldspot:	28.2 °C	 Emissivity:	0.91
 Center Spot:	30.1 °C	 Reflected Temperature:	23.0 °C

42.6 °C



28.2 °C



Taken on 14/04/26



1.30 RB06945X.JPG

Page 1

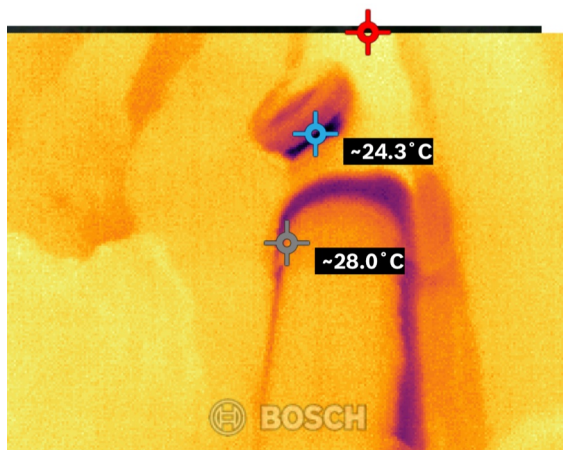
Device: GTC 600 C Professional
Serial Number: 0158

 Hotspot:	~29.5 °C	 Material:	Tiles
 Coldspot:	~24.3 °C	 Emissivity:	0.91
 Center Spot:	~28.0 °C	 Reflected Temperature:	23.0 °C

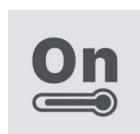
29.5 °C



24.3 °C



Taken on 14/04/26



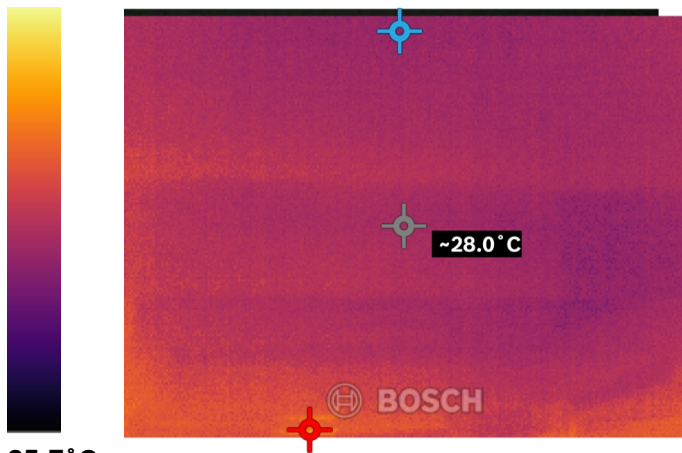
1.31 RB06944X.JPG

Page 1

Device: GTC 600 C Professional
Serial Number: 0158

 Hotspot:	~ 30.7 °C	 Material:	Tiles
 Coldspot:	~ 25.7 °C	 Emissivity:	0.91
 Center Spot:	~ 28.0 °C	 Reflected Temperature:	23.0 °C

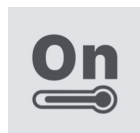
30.7 °C



25.7 °C



Taken on 14/04/26



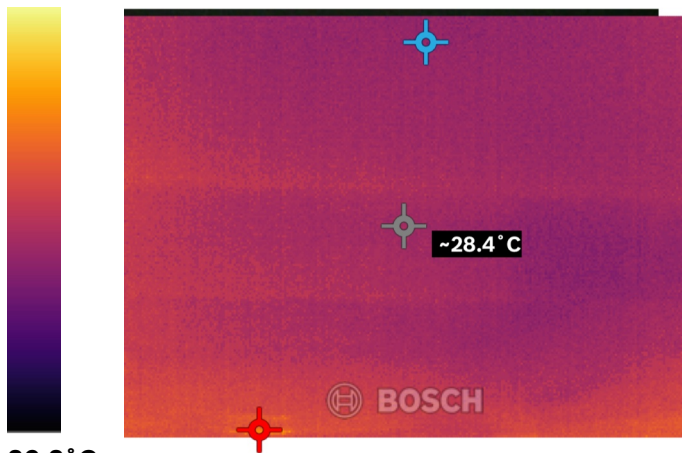
1.32 RB06943X.JPG

Page 1

Device: GTC 600 C Professional
Serial Number: 0158

 Hotspot:	~ 31.2 °C	 Material:	Tiles
 Coldspot:	~ 26.2 °C	 Emissivity:	0.91
 Center Spot:	~ 28.4 °C	 Reflected Temperature:	23.0 °C

31.2 °C



26.2 °C



Taken on 14/04/26

